

Date: Tuesday 17 December 2024 at 4.00 pm

Venue: Jim Cooke Conference Suite, Stockton Central Library, Church Road,
Stockton-on-Tees TS18 1TU

Cllr Marc Besford (Chair)
Cllr Nathan Gale (Vice-Chair)

Cllr Stefan Barnes
Cllr John Coulson
Cllr Lynn Hall
Cllr Vanessa Sewell

Cllr Carol Clark
Cllr Ray Godwin
Cllr Jack Miller

AGENDA

6 Scrutiny Review of Reablement Service

To consider information from the North Tees and
Hartlepool NHS Foundation Trust (NTHFT) in relation to
this scrutiny topic.

(Pages 7 - 22)

Members of the Public - Rights to Attend Meeting

With the exception of any item identified above as containing exempt or confidential information under the Local Government Act 1972 Section 100A(4), members of the public are entitled to attend this meeting and/or have access to the agenda papers.

Persons wishing to obtain any further information on this meeting, including the opportunities available for any member of the public to speak at the meeting; or for details of access to the meeting for disabled people, please

Contact: Senior Scrutiny Officer, Gary Woods on email gary.woods@stockton.gov.uk

KEY - Declarable interests are:-

- Disclosable Pecuniary Interests (DPI's)
- Other Registerable Interests (ORI's)
- Non Registerable Interests (NRI's)

Members – Declaration of Interest Guidance



Table 1 - Disclosable Pecuniary Interests

Subject	Description
Employment, office, trade, profession or vocation	Any employment, office, trade, profession or vocation carried on for profit or gain
Sponsorship	Any payment or provision of any other financial benefit (other than from the council) made to the councillor during the previous 12-month period for expenses incurred by him/her in carrying out his/her duties as a councillor, or towards his/her election expenses. This includes any payment or financial benefit from a trade union within the meaning of the Trade Union and Labour Relations (Consolidation) Act 1992.
Contracts	Any contract made between the councillor or his/her spouse or civil partner or the person with whom the councillor is living as if they were spouses/civil partners (or a firm in which such person is a partner, or an incorporated body of which such person is a director* or a body that such person has a beneficial interest in the securities of*) and the council — (a) under which goods or services are to be provided or works are to be executed; and (b) which has not been fully discharged.
Land and property	Any beneficial interest in land which is within the area of the council. 'Land' excludes an easement, servitude, interest or right in or over land which does not give the councillor or his/her spouse or civil partner or the person with whom the councillor is living as if they were spouses/ civil partners (alone or jointly with another) a right to occupy or to receive income.
Licences	Any licence (alone or jointly with others) to occupy land in the area of the council for a month or longer.
Corporate tenancies	Any tenancy where (to the councillor's knowledge)— (a) the landlord is the council; and (b) the tenant is a body that the councillor, or his/her spouse or civil partner or the person with whom the councillor is living as if they were spouses/ civil partners is a partner of or a director* of or has a beneficial interest in the securities* of.
Securities	Any beneficial interest in securities* of a body where— (a) that body (to the councillor's knowledge) has a place of business or land in the area of the council; and (b) either— (i) the total nominal value of the securities* exceeds £25,000 or one hundredth of the total issued share capital of that body; or (ii) if the share capital of that body is of more than one class, the total nominal value of the shares of any one class in which the councillor, or his/ her spouse or civil partner or the person with whom the councillor is living as if they were spouses/civil partners have a beneficial interest exceeds one hundredth of the total issued share capital of that class.

* 'director' includes a member of the committee of management of an industrial and provident society.

* 'securities' means shares, debentures, debenture stock, loan stock, bonds, units of a collective investment scheme within the meaning of the Financial Services and Markets Act 2000 and other securities of any description, other than money deposited with a building society.

Table 2 – Other Registerable Interest

You must register as an Other Registrable Interest:

- a) any unpaid directorships
- b) any body of which you are a member or are in a position of general control or management and to which you are nominated or appointed by your authority
- c) any body
 - (i) exercising functions of a public nature
 - (ii) directed to charitable purposes or
 - (iii) one of whose principal purposes includes the influence of public opinion or policy (including any political party or trade union) of which you are a member or in a position of general control or management

This page is intentionally left blank

Adult Social Care and Health Select Committee

17 December 2024

SCRUTINY REVIEW OF REABLEMENT SERVICE**Summary**

The third evidence-gathering session for the Committee's review of Reablement Service will consider information from North Tees and Hartlepool NHS Foundation Trust (NTHFT) in relation to this scrutiny topic.

Detail

1. NTHFT has been asked to respond to the following lines of enquiry:
 - *NTHFTs role within reablement provision (including promotion of the existing offer)*
 - *Partnership-working with the Council / NENC ICB regarding this service – is this efficient / are there any areas which can be improved?*
 - *Views on existing local service / provision (e.g. effectiveness (is this measured?) / value-for-money / impact on the Trust)*
 - *Any feedback received from partners / public in relation to the Stockton-on-Tees reablement service*
 - *Future considerations / priorities around local reablement provision from a Trust perspective*
2. A presentation has been prepared and is also attached. The NTHFT Care Group Director and the NTHFT Head of Community Services are scheduled to be in attendance to provide an overview of the submission and respond to any comments / questions.
3. For background information, recently published NHS surveys include feedback on the experiences of patients leaving hospital. Results for NTHFT are provided below (as are outcomes for South Tees Hospitals NHS Foundation Trust (STHFT)):

Adult inpatient survey 2023 (published August 2024)

 - NTHFT: <https://www.cqc.org.uk/provider/RVW/surveys/52>
 - STHFT: <https://www.cqc.org.uk/provider/RTR/surveys/52>

Urgent and emergency care survey 2024 - type 1 services (A&E) (published November 2024)

 - NTHFT: <https://www.cqc.org.uk/provider/RVW/surveys/55>
 - STHFT: <https://www.cqc.org.uk/provider/RTR/surveys/55>

Urgent and emergency care survey 2024 - type 3 services (UTCs) (published November 2024)

 - NTHFT: <https://www.cqc.org.uk/provider/RVW/surveys/56>
 - STHFT: <https://www.cqc.org.uk/provider/RTR/surveys/56>
4. A copy of the agreed scope and plan for this review is included for information.

Name of Contact Officer: Gary Woods
Post Title: Senior Scrutiny Officer
Telephone No: 01642 526187
Email Address: gary.woods@stockton.gov.uk

This page is intentionally left blank



University Hospitals Tees



Matt Wynne, Care Group Director
Jill Foreman, Head of Community
Services



Adult social care and health select
committee
17th December 2024



Caring
Better
Together

NTHFT Current role working alongside Stockton Reablement Service

- Home First principles
- Integrated Single point of Access
- Integrated Discharge team – top performing ED in England
- Community Integrated Assessment Team (CIAT)– working in collaboration with Reablement (30 Clients on average per month 80 contacts)
- Trusted assessments – 7 days
- Change to delivery – Autumn 2024
- Realignment of therapy & challenge over prescribing



-



**Caring
Better
Together**

Case study 1 – Support in the Community

- An urgent referral for received via NEAS Bleep into Community Integrated Assessment Team (CIAT).
- A gentleman fell when trying to walk to the toilet at home with no obvious injuries. He lives with his wife and was independent prior to the fall.
- CIAT arrived within 30 minutes. He was laid on the bathroom floor. A full body screening and clinical observations were taken. He presented with acute confusion. Staff used a slide sheet to move him to the corridor so he could be safely raised from the floor using a Raiser.
- Assessment identified that he required assistance of one with a wheeled zimmer frame for mobility and his wife was unable to provide support for personal care.
- Referred to Virtual Frailty Ward for further clinical assessments, treatment and observation
- Referred to Reablement Service for further support
-



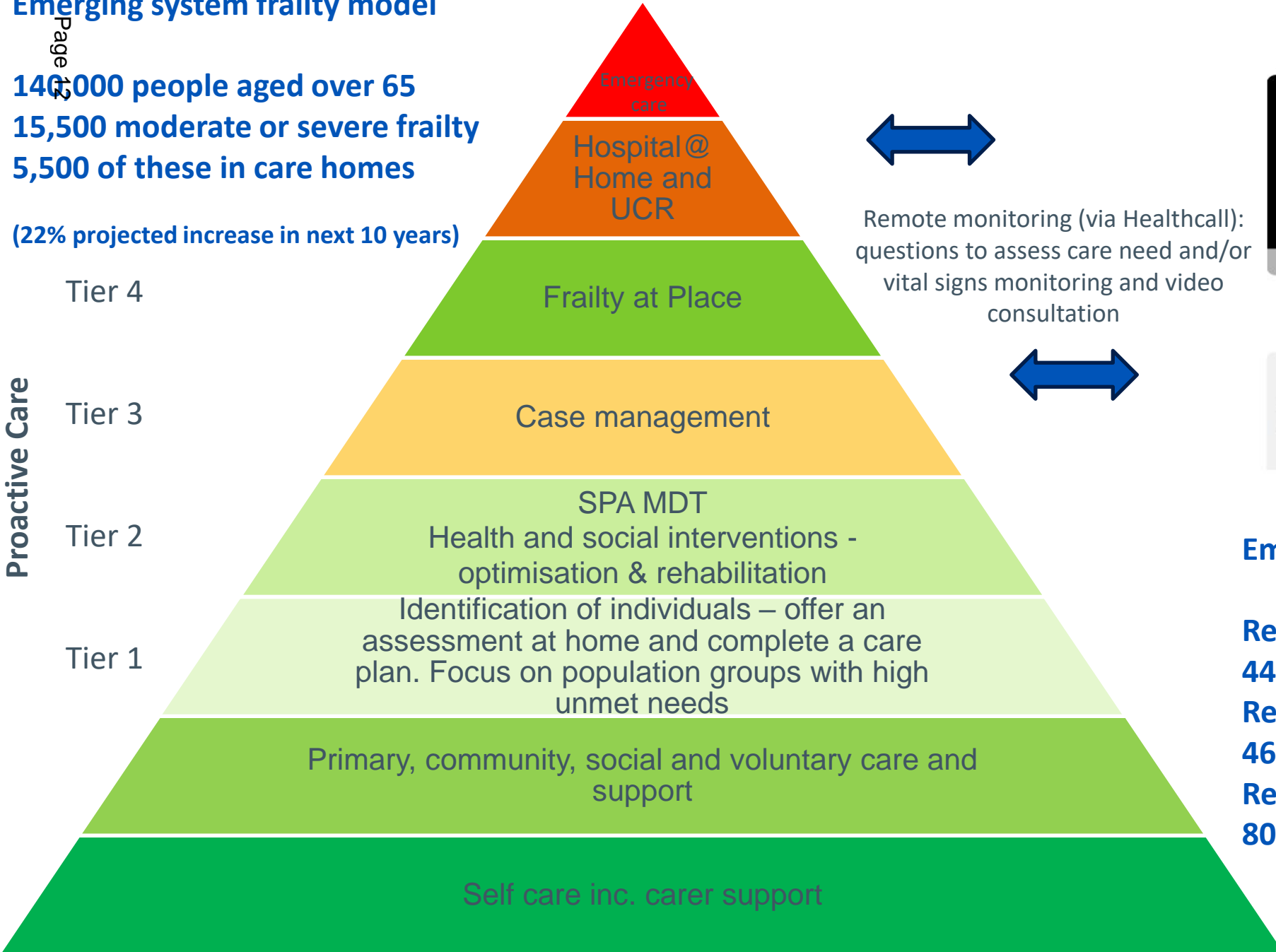
**Caring
Better
Together**

Emerging system frailty model

140,000 people aged over 65
15,500 moderate or severe frailty
5,500 of these in care homes

(22% projected increase in next 10 years)

Proactive Care



Remote monitoring (via Healthcall):
questions to assess care need and/or
vital signs monitoring and video
consultation



Emerging outputs

- Reduce admissions in >65 from 44,000/yr
- Reduce Care Home admissions from 4620/yr
- Reduce A&E attendances in >65 from 80,000/yr

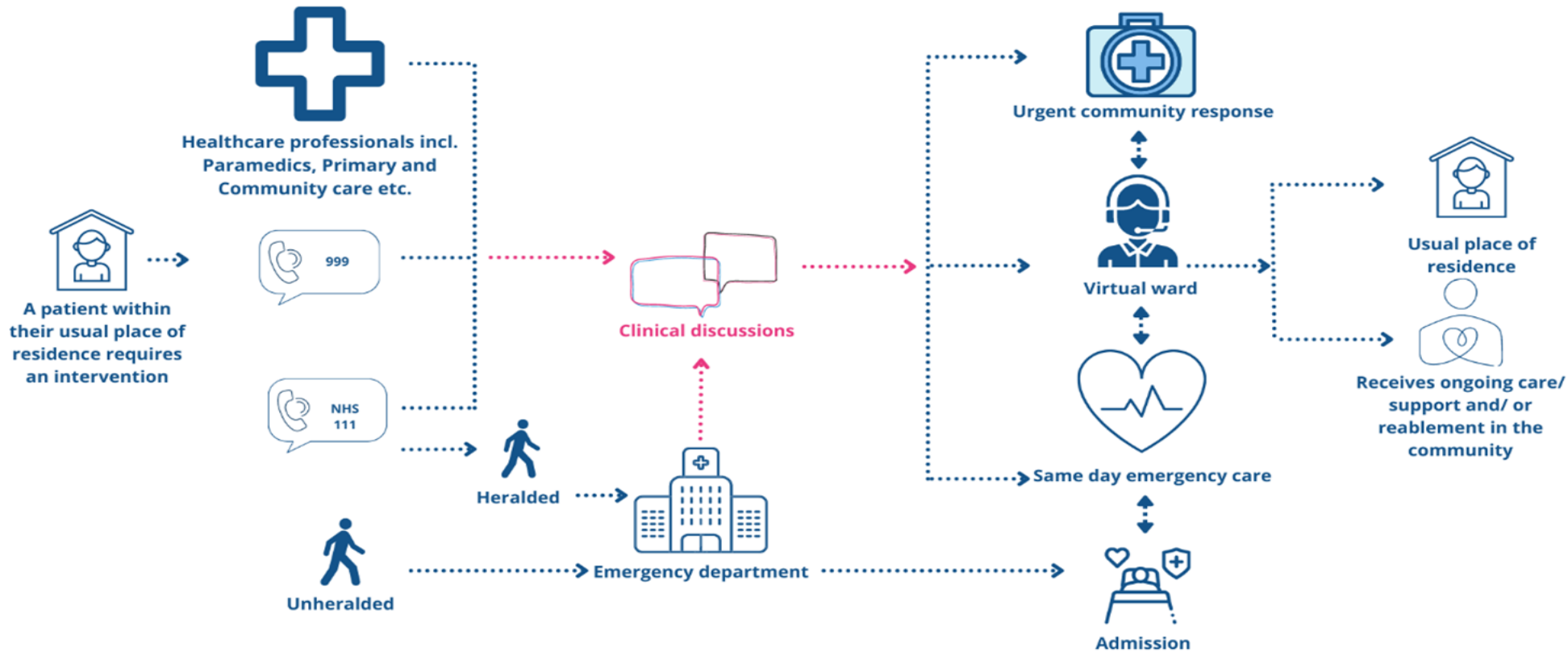
NHSE Frailty strategy

Ongoing care within the community, but a decision has been made that an intervention is needed

A clinical discussion with the relevant service to provide rapid support

All services have the opportunity to refer to other services to support ongoing care

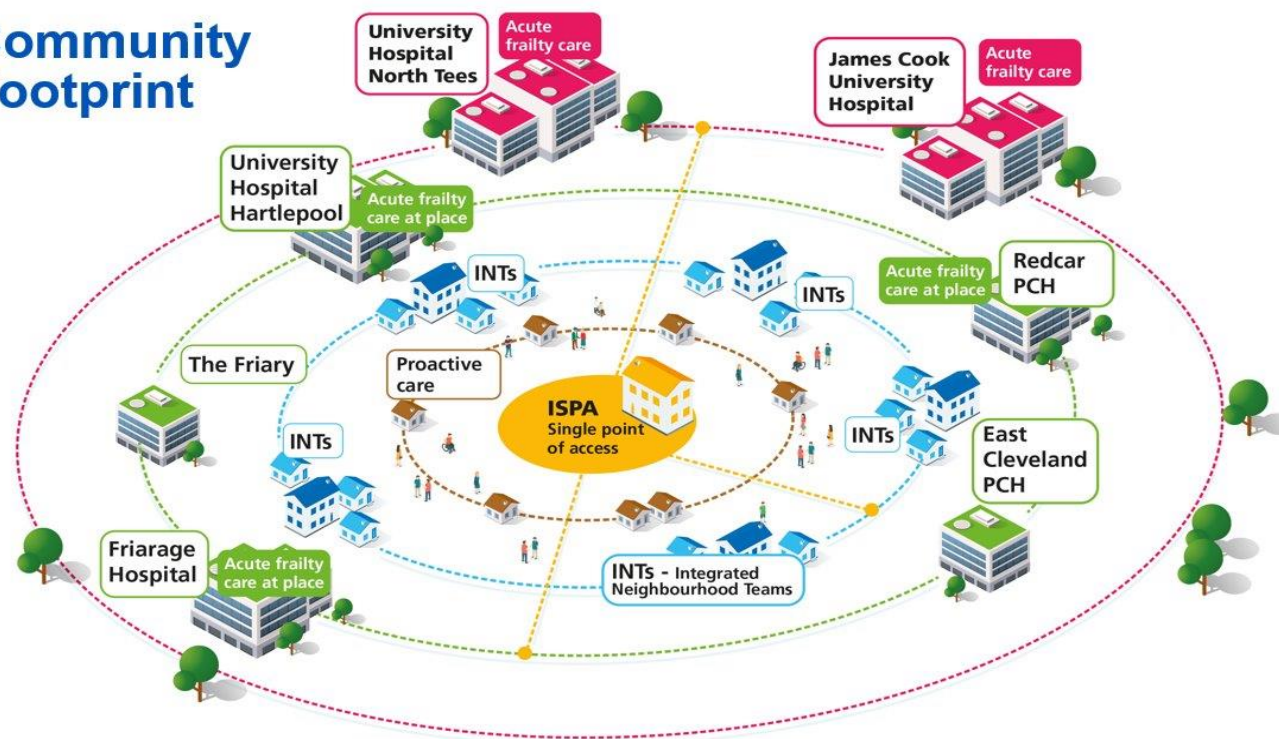
Patient remains within community or if within secondary care, aim to discharge same day



Future possibilities

- Hospital to Community
 - Analogue to digital
 - Prevention
-
- Integrated model
 - 24/7 access
 - Discharge to assess principles
 - Complex case management
 - Community OPTICA

Community Footprint



Caring
Better
Together

Thank you



This page is intentionally left blank

Adult Social Care and Health Select Committee
Review of Reablement Service
Outline Scope

Scrutiny Chair (Project Director): Cllr Marc Besford	Contact details: marc.besford@stockton.gov.uk
Scrutiny Officer (Project Manager): Gary Woods	Contact details: gary.woods@stockton.gov.uk 01642 526187
Departmental Link Officer: Rob Papworth (SBC Strategic Development Manager (Adults & Health))	Contact details: rob.papworth@stockton.gov.uk
Which of our strategic corporate objectives does this topic address?	
<p>The review will contribute to the following Council Plan 2023-2026 key objectives (and associated 2023-2024 priorities):</p> <p><i>A place where people are healthy, safe and protected from harm</i></p> <ul style="list-style-type: none"> • Support people to remain safely and independently in their homes for as long as possible and offer help to people who are feeling lonely. • Engage with individuals, families, carers and communities when developing adult social care support and continue to collaborate with the NHS to ensure health and care services work effectively together. 	
What are the main issues and overall aim of this review?	
<p>'Reablement' is a short period of rehabilitation which usually takes place in a person's own home.</p> <p>National evidence suggests that supporting early and safe discharge from hospital into a reablement-type service delivers better outcomes for individuals when compared to longer periods of hospitalisation or immediate transfer into care at home. It is also cost-effective for health and adult social care services, both reducing pressure on bed-capacity in hospitals and the need for large packages of ongoing community or residential or nursing care. Research has continued to evidence that most people prefer to remain in their own homes and communities.</p> <p>Locally, the Reablement Service provides support for people with poor physical or mental health to help them manage their illness / condition by learning or re-learning the skills necessary for daily living (so that they can remain in the community). The service seeks to ensure that people can maximise their independence when they need it – this can include both 'step-up' care (escalation of need for people already supported to live independently) as well as 'step-down' (to avoid hospital admission or ensure safe discharges). It also promotes and supports people to be more independent and reduce the need for long-term service provision for as long as possible.</p> <p>The offer is provided free (as mandated by the Care Act 2014) for the person receiving support for up to a maximum of six weeks. A person with ongoing care and support needs following this six weeks will be financially assessed for their ongoing contribution to their care.</p>	

There are a number of Stockton-on-Tees Borough Council (SBC) *Powering Our Future* (POF) projects that link to this review; 'Supporting People to Live Independently' and 'Early Intervention and Prevention'. The final report produced by the Adult Social Care and Health Select Committee will be submitted to these workstreams for their awareness.

The aim of the review is to identify whether the Reablement Service offered by the Council is:

- 1) maximising independence for people being discharged from hospital and living in the community.
- 2) reducing the need for ongoing, more intensive support in people's own homes and reducing the need for admission into 24-hour care.
- 3) working effectively with NHS provision that supports people on a reablement pathway.
- 4) using technology as effectively as possible.

The Committee will undertake the following key lines of enquiry:

Which organisations are involved in the planning and delivery of the existing local Reablement Service and what role do they play?

How much does the service cost the Council and its partners, and how is it funded? Is current funding sufficient for future projected provision?

What is the previous / current / anticipated capacity and subsequent demand for use of the service?

How is the service promoted and how do people access it / how are they identified as potentially benefitting from it?

How does the Council and the NHS monitor the impact and effectiveness of the service?

What technology is used within current service provision? What options are there to incorporate technology in future service provision?

Is there an opportunity to involve the VCSE more in the reablement pathway.

Feedback from service-users and their families / carers – how easy was it to access; did the service help an individual's independence; was Council and NHS provision provided in a seamless way?

Who will the Committee be trying to influence as part of its work?

Council, Cabinet, North East and North Cumbria Integrated Care Board (NENC ICB), local NHS Trusts, social care providers, public.

Expected duration of review and key milestones:

6 months (report to Cabinet in March 2025)

What information do we need?

Existing information (background information, existing reports, legislation, central government documents, etc.):

- Social Care Institute for Excellence (SCIE): Role and principles of reablement (<https://www.scie.org.uk/integrated-care/intermediate-care-reablement/role-and-principles-of-reablement/>)
- NHS: Care after illness or hospital discharge (reablement) (<https://www.nhs.uk/conditions/social-care-and-support-guide/care-after-a-hospital-stay/care-after-illness-or-hospital-discharge-reablement/>)

- Care Quality Commission (CQC): SBC Reablement Service (latest inspection – May 2021) (<https://api.cqc.org.uk/public/v1/reports/40ab9f3d-8d99-463f-a538-6e615a29fb73?20210521120000>)

Who can provide us with further relevant evidence? (Cabinet Member, officer, service user, general public, expert witness, etc.)

What specific areas do we want them to cover when they give evidence?

Stockton-on-Tees Borough Council

- Adults, Health and Wellbeing (Strategy and Transformation)
 - Legal requirements regarding reablement
 - Existing service structure, costs and funding
 - Access / promotion of service and levels of demand
 - Impact of service and current / future challenges
 - Views on planning and delivery of existing service
- Reablement Manager and staff
- Service Managers for Reablement / Social Care Teams / Social Workers
 - Role within reablement provision
 - Views on existing local service / feedback received

North East and North Cumbria Integrated Care Board (NENC ICB)

- Role within reablement provision
- Partnership-working with the Council
- Views on existing local service / feedback received

Local NHS Trusts

VCSE Sector

- Potential for involvement in reablement pathway

Service-Users and Families / Carers

- Views on experience of service / ways to improve

Other Local Authority Areas

- Any alternative approaches to reablement provision

How will this information be gathered? (eg. financial baselining and analysis, benchmarking, site visits, face-to-face questioning, telephone survey, survey)

Committee meetings, reports, research, reviewing existing / seeking provider and service feedback, site visits (TBC)

Communities Powering Our Future: How will key partners and the public be involved in the review?

Committee meetings, information submissions, analysis of historical / new feedback on services.

How will the review help the Council meet the Public Sector Equality Duty?

The Public Sector Equality Duty requires that public bodies have due regard to the need to advance equality of opportunity and foster good relations between different people when carrying out their activities. This review will be mindful of these factors.

How will the review contribute towards the Joint Strategic Needs Assessment, or the implementation of the Health and Wellbeing Strategy?

Stockton Joint Strategic Needs Assessment (JSNA): Information gathered will contribute to the ongoing development of the JSNA.

Stockton-on-Tees Joint Health and Wellbeing Strategy 2019-2023: Maximising health and wellbeing.

Provide an initial view as to how this review could lead to efficiencies, improvements and / or transformation:

- Maximising independence and reduced need for more intensive support at home or within 24-hour care provision.
- The use of technology is an effective enabler for people's independence and supports people to live their lives as independently as possible.

Project Plan

Key Task	Details/Activities	Date	Responsibility
Scoping of Review	Information gathering	June / July 2024	Scrutiny Officer Link Officer
Tri-Partite Meeting	Meeting to discuss aims and objectives of review	09.09.24	Select Committee Chair and Vice Chair, Cabinet Member(s), Director(s), Scrutiny Officer, Link Officer
Agree Project Plan	Scope and Project Plan agreed by Committee	17.09.24	Select Committee
Publicity of Review	Determine whether Communications Plan needed	TBC	Link Officer, Scrutiny Officer
Obtaining Evidence	SBC Adults, Health & Wellbeing NENC ICB Local NHS Trusts Peopletoo Catalyst / VCSE sector Service-user / family feedback Other Council approaches	22.10.24 19.11.24 17.12.24 21.01.25 18.02.25	Select Committee
Members decide recommendations and findings	Review summary of findings and formulate draft recommendations	18.03.25	Select Committee
Circulate Draft Report to Stakeholders	Circulation of Report	March 2025	Scrutiny Officer
Tri-Partite Meeting	Meeting to discuss findings of review and draft recommendations	TBC	Select Committee Chair and Vice Chair, Cabinet Member(s), Director(s), Scrutiny Officer, Link Officer
Final Agreement of Report	Approval of final report by Committee	22.04.25	Select Committee, Cabinet Member, Director
Consideration of Report by Executive Scrutiny Committee	Consideration of report	[20.05.25]	Executive Scrutiny Committee
Report to Cabinet / Approving Body	Presentation of final report with recommendations for approval to Cabinet	15.05.25	Cabinet / Approving Body

This page is intentionally left blank